

Straight Cutter – Fitting the Blade

The guard should be kept on the cutter when not in use

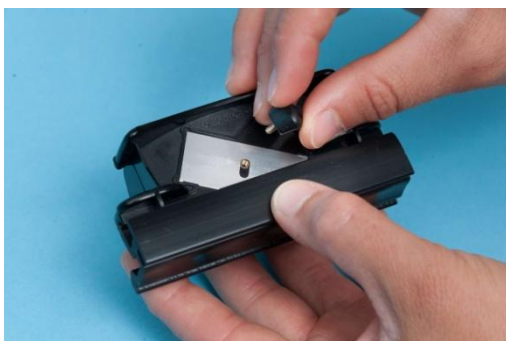
For Right Handed use:

1. Pick up the cutter in one hand.
2. Hold the end of the blade with your other hand between finger and thumb.



3. Slide the blade into the raised slot on the cutter.

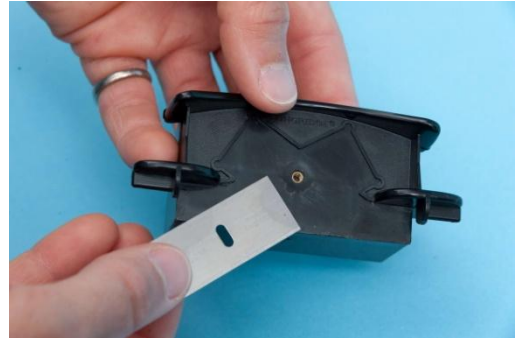
4. Hold the blade in place whilst fitting the safety guard.



5. Screw in the screw to secure the blade.

For Left Handed use:

1. Pick up the cutter in one hand.
2. Hold the end of the blade with your other hand between finger and thumb.



3. Slide the blade into the raised slot on the cutter.

4. Hold the blade in place whilst fitting the safety guard.



5. Screw in the screw to secure the blade.

**Vertical Cutter showing blade fitted for
Left Hand and Right Hand Use respectively**

